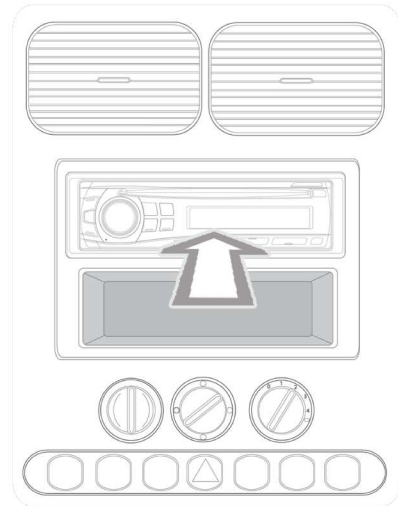
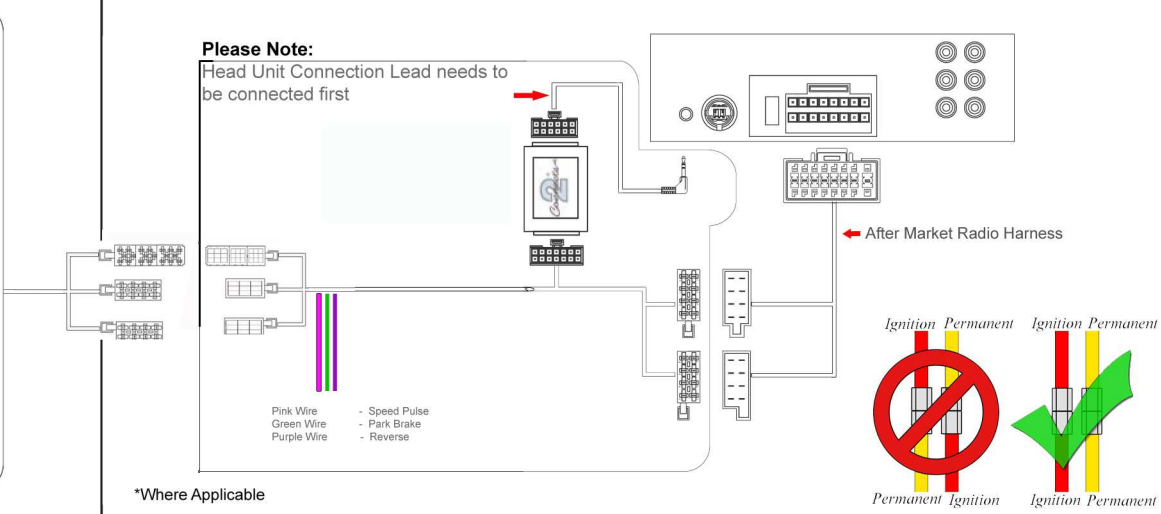
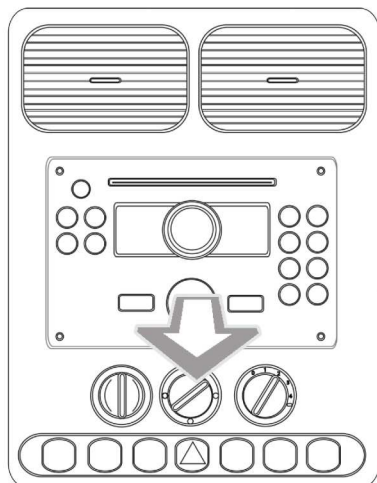


# Installation Guide

Part No: CTSRN007.2 Renault Can-Bus Steering Wheel Control Interface



## Vehicle Compatibility:

|                |        |
|----------------|--------|
| Renault Megane | 2008 > |
| Wind           | 2010 > |
| Clio           | 2009 > |
| Scenic         | 2009 > |

ISO Connector  
Phone Button Support

## Steering Wheel Control Functions



Track Up

Track Down



Source



Volume Up

Volume Down

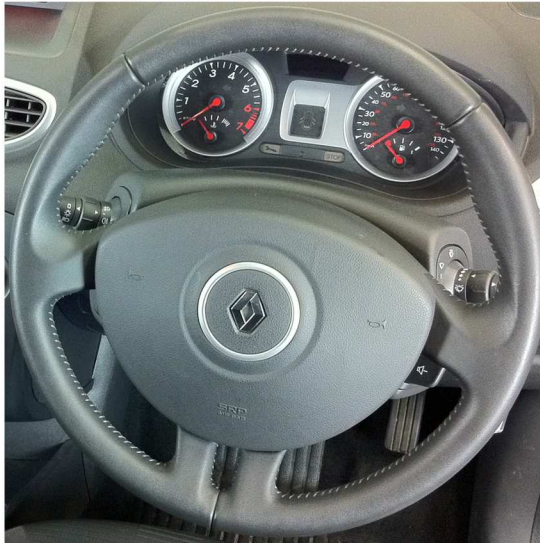
\* Note All Dates are guide lines only as specifications of vehicles change

# Installation Guide

Part No: CTSRN007.2 Renault Can-Bus Steering Wheel Control Interface

## User Guide

### Steering wheel control Interface



### Setting the Clock (Vehicles with and without Clock setting buttons)

1. To enter clock setting mode, press and hold the 'AUDIO SOURCE' button on the steering wheel until the time displayed on the dash shows '00:00'
2. After one second, the display will return back to normal. This indicates you are now in clock setting mode.
3. Use Vol + and Vol - on the steering wheel to adjust the time.  
Vol + changes hours and Vol - changes minutes.
4. Once the time has been set, if neither button is pushed within five seconds the display will show 00:00 for one second to indicate clock setting mode has been left.